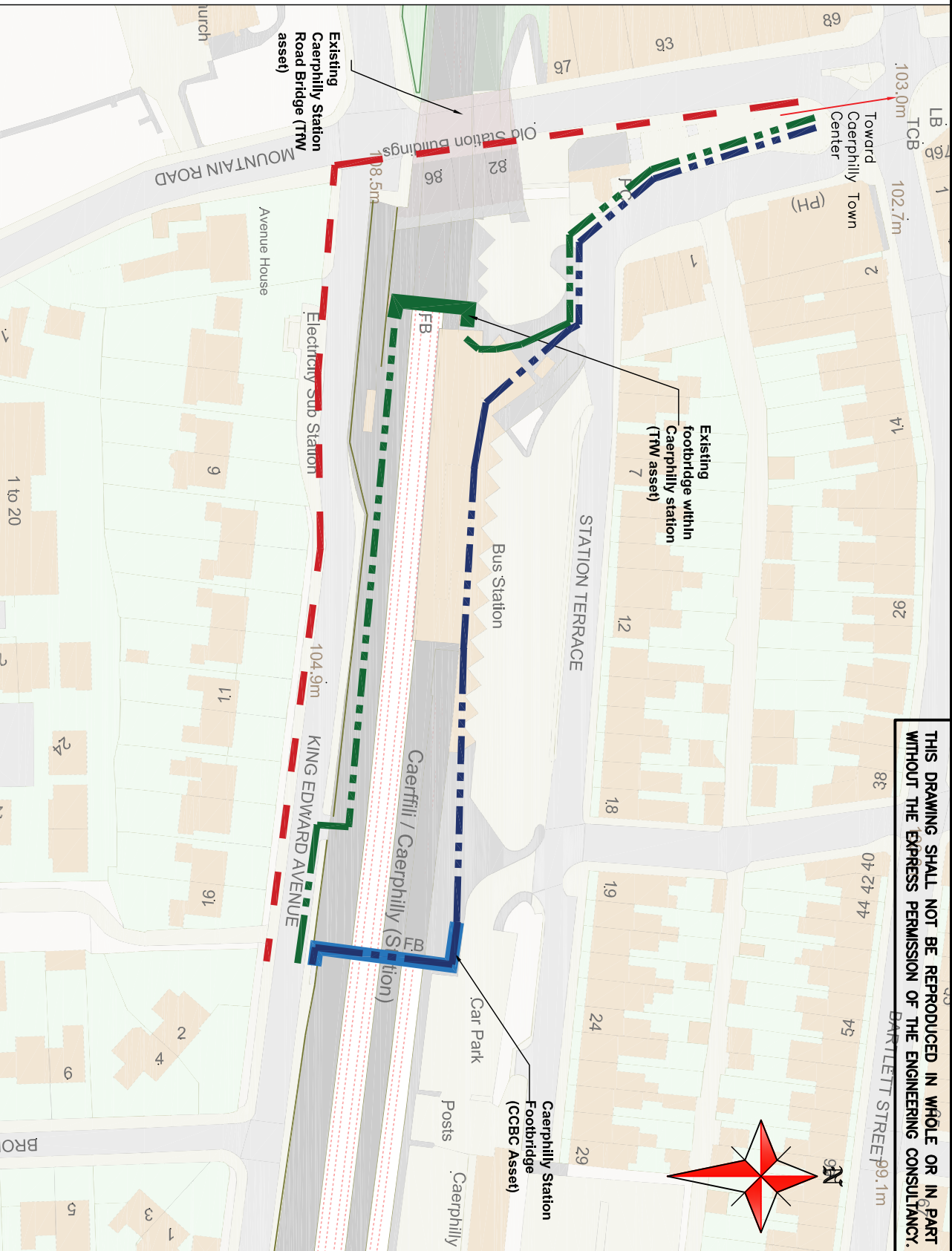


Legend:

- Route length: Approx. 260metres. Only current accessible route for wheelchair users, mobility scooters, prams etc.
- - - Route length: Approx. 250 metres.
- - - Route length: Approx. 255 metres.



THIS DRAWING SHALL NOT BE REPRODUCED IN WHOLE OR IN PART WITHOUT THE EXPRESS PERMISSION OF THE ENGINEERING CONSULTANCY.



ENGINEERING PROJECTS GROUP
ENGINEERING CONSULTANCY
 Head of Infrastructure – Marcus Lloyd
 B.Eng, MBA, C.Eng, MCE, MCMI, MCHT

Project title	Caerphilly Station Footbridge		
drawing title	Existing pedestrian access		
date	Jan 24	drawn	LR
scale	NTS	@A4	checked
			LR
			SK01